



Fan Clutch Spacers

MODELS AFFECTED: 2008-2009 BBCV Visions w/ 2007 Cat Engines

ISSUE

Fan may separate from fan clutch and may damage fans blades, fan clutch, radiator, hoses and other surrounding components.

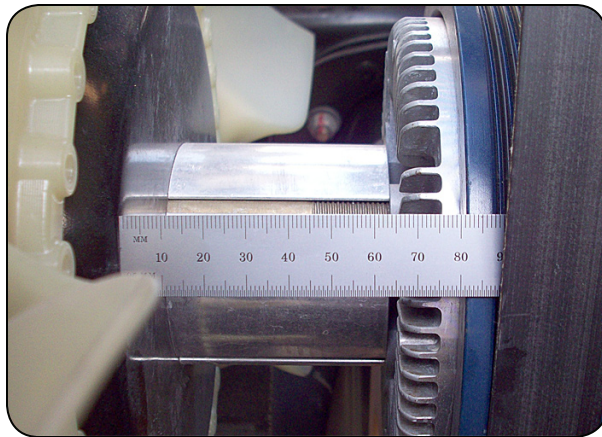
CORRECTIVE ACTION

Inspect fan spacer length and install new spacer and bolts as required.

WARNING Always follow all Federal, State, Local, and Shop safety standards and use proper safety equipment when performing this procedure.

INSPECTION

- 1 Park vehicle on a level surface, apply parking brake, turn engine off, remove ignition key and chock wheels.
- 2 Disconnect batteries.
- 3 Open engine hood.
- 4 Measure the length of the spacer between the fan blade and the fan clutch. See Diagram and Chart to the right for correct installations and determine procedure needed.



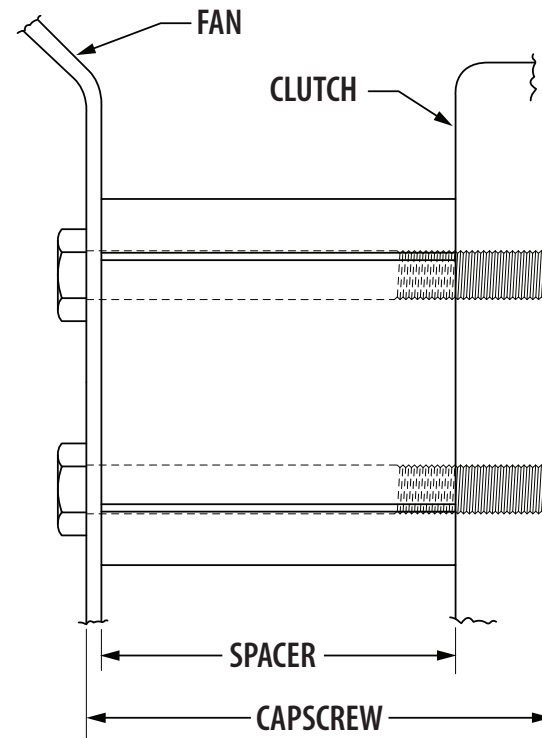
Inspection

PROCEDURE 1 (with correct spacer and wrong capscrews)
 For CAT C707 with CGI & DPF, and a 66.7mm (2 5/8 inch) spacer.
 Note: Caterpillar C707 with CGI and DPF has a Regen switch mounted on the entrance door side fire wall.

NOTE: CAT C707 engines are equipped with Clean Gas Induction (CGI) and a Diesel Particulate Filter (DPF). CAT C7 and Export units are not equipped with CGI and DPF.

PROCEDURE 2 (with wrong spacer and wrong capscrews)
 For CAT C707 with CGI & DPF, and a 52.8mm (2 5/64 inch) spacer.
 Note: Caterpillar C707 with CGI and DPF has a Regen switch mounted on the entrance door side fire wall.

PROCEDURE 3 (with wrong spacer and wrong capscrews)
 For CAT C7 without CGI & DPF, or Export unit; with a 66.7mm (2 5/8 inch) spacer.



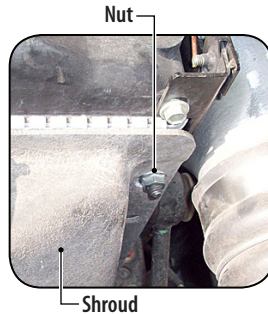
ENGINE	SPACER	CAPSCREW
CAT C707 with CGI & DPF	66.7mm (2 5/8 inches)	90mm M10-1.5 X 90mm
CAT C7 or Export without CGI & DPF	52.8mm (2 5/64 inches)	70mm M10-1.5 X 70mm

PROCEDURE 1 (With correct spacer and wrong capscrews.)

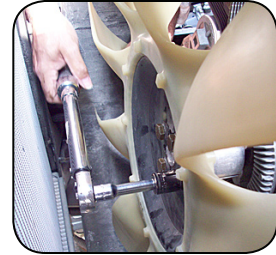
For CAT C707 with CGI & DPF, and a 66.7mm (2 5/8 inch) spacer.
Note: Caterpillar C707 with CGI and DPF has a Regen switch mounted on the entrance door side fire wall.

1 Remove and retain the four nuts attaching the fan shroud to the radiator. Slide the shroud rearward for access to the four capscrews attaching the fan to the fan clutch.

2 Remove the four 80mm capscrews and discard. Retain the four lock washers.



3 Install four 90mm capscrews (Blue Bird #10000385) with four lock washers and torque to 20-25 lb. ft. *Note: Four 90mm capscrews (Blue Bird #10000385) shipped with original Service Bulletin.*



4 Slide fan shroud forward and reattach with four nuts removed in step one.

5 Close engine hood.

6 Reconnect batteries and place the bus back in service.

PARTS LIST

PART NUMBER	QUANTITY	DESCRIPTION
10000385	4	*Capscrew, Hex head, M10-1.5 x 90mm*

Supplied with original Service Bulletin.

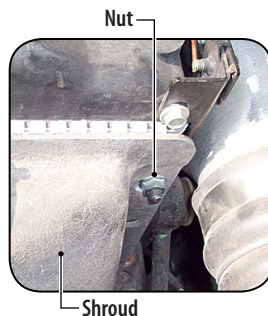
PROCEDURE 2 (With wrong spacer and wrong capscrews.)

For CAT C707 with CGI & DPF, and a 52.8mm (2 5/64 inch) spacer.
Note: Caterpillar C707 with CGI and DPF has a Regen switch mounted on the entrance door side fire wall.

1 Remove and retain the four nuts attaching the fan shroud to the radiator. Slide the shroud rearward for access to the four capscrews attaching the fan to the fan clutch.

2 Remove and discard the four 80mm capscrews and spacer. Retain the four lock washers.

3 Install new Spacer (Blue Bird #10005240) with four 90mm capscrews (Blue Bird #10000385) and four lock washers. Torque to 20-25 lb. ft.



4 Slide fan shroud forward and reattach with four nuts removed in step one.

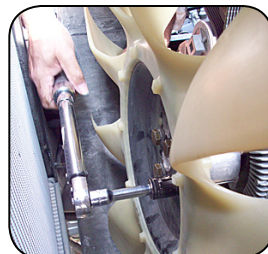
5 Close engine hood.

6 Reconnect batteries and place the bus back in service.

PARTS LIST

PART NUMBER	QUANTITY	DESCRIPTION
10005240	1	Spacer, Clutch, Fan, Horton, 00115258
10000385	4	**Capscrew, Hex head, M10-1.5 x 90mm**

Order only if not provided

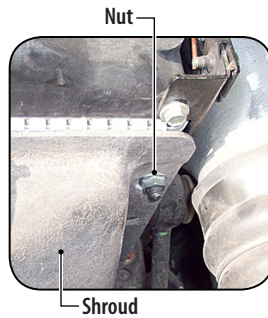




PROCEDURE 3 (Export only with wrong spacer and wrong capscrews.)

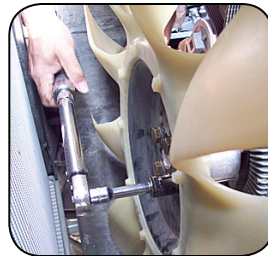
For CAT C7 without CGI & DPF, or Export unit; with a 66.7mm (2 5/8 inch) spacer.

1 Remove and retain the four nuts attaching the fan shroud to the radiator. Slide the shroud rearward for access to the four capscrews attaching the fan to the fan clutch.



2 Remove and discard the four capscrews and spacer. Retain the four lock washers.

3 Install new Spacer (Blue Bird #10005241) with four 70mm capscrews (Blue Bird #01265990) and four lock washers. Torque to 20-25 lb. ft.



4 Slide fan shroud forward and reattach with four nuts removed in step one.

5 Close engine hood.

6 Reconnect batteries and place the bus back in service.

PARTS LIST

PART NUMBER	QUANTITY	DESCRIPTION
10005241	1	Spacer, Clutch, Fan, Horton, 00068057
01265990	4	Capscrew, Hex head, M10-1.5 x 70mm