

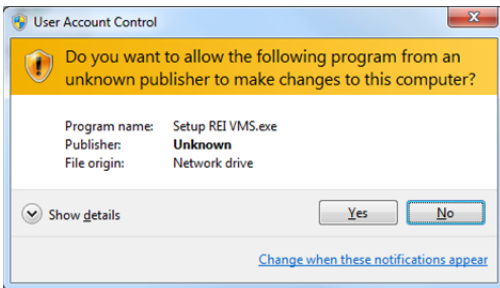
Software Installation

To install the REI VMS:

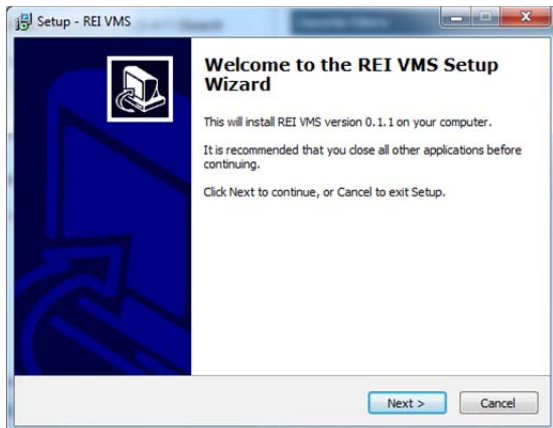
- 1) Locate the installation program, "Setup REI VMS.exe" on your CD-ROM and double click the icon.



- 2) If the User Account Control screen is shown, click 'Yes'.



- 3) When the 'Welcome Screen' shows, follow the instructions on the screen.



Viewing Hard Drive Video

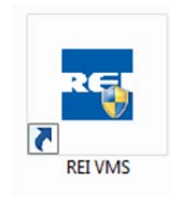
- 1) Unlock the Hard Drive from the DVR by turning the key from the "Lock" to the "Unlock" position. Firmly pull the Hard Drive out of the BUS-WATCH® Device.



- 2) Connect the Hard Drive to the computer using the provided USB Cable.



- 3) Find and double click the icon REI VMS on your Windows Desktop.



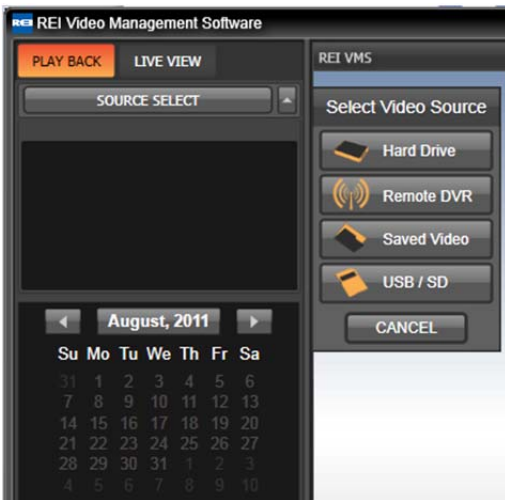


Quick-Start

- 4) The default window should appear like the below window. The details of each button will be detailed in other sections.



- 5) Click 'SOURCE SELECT' and then select the button for 'Hard Drive'.

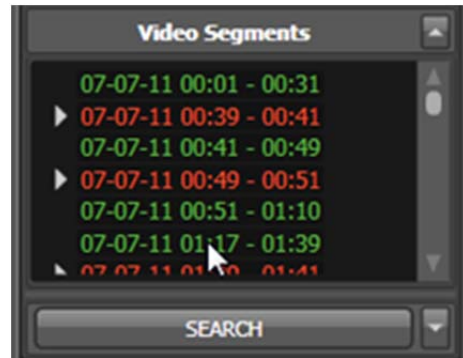


- 6) The Hard Drive will populate the Calendar and then the Video Segments list. To begin playback, you may:

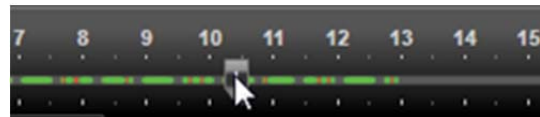
- a) Find and select the 'Play' button



- b) Double-click and item in the Video Segments list



- c) Select a location on the Time Bar:



REI has 24/7 technical support to assist you. If you have any questions please call the service hotline at:

1-877-726-4617 (Toll Free)