

R03GZ

November 20, 2003

Dear Blue Bird Owner:

This notice is sent to you in accordance with the requirements of the National Traffic and Motor Vehicle Safety Act.

Blue Bird Corporation has decided that certain 1999 through 2004 model year Blue Bird All American (A3RE) rear engine model school buses manufactured from October 02, 1998 through August 22, 2003 and certain 1991 through 2000 model year TC/2000 (TCRE, T2RE) rear engine model school buses manufactured from August 31, 1990 through July 12, 1999 do not comply with FMVSS-221 School Bus Body Joint Strength.

The non-compliance involves the bolts that attach the rear of the driver's platform to the body structure. Subject buses were manufactured with bolts omitted in the rear of the driver's platform flange and the adjoining body structure.

Blue Bird Body Company's evaluation of the risk to motor vehicle safety is that the rear of the driver's platform may not be properly retained in the event of a severe impact which could increase the risk of injury or death to passengers.

Your Blue Bird bus(es) affected by recall R03GZ are identified by body serial number(s) on the enclosed reply sheets. **You should have this condition corrected immediately.**

Federal law requires that any vehicle lessor receiving this recall notice must forward a copy of this notice to the lessee within ten days.

If you no longer own the subject bus(es), please complete the appropriate section of the **yellow** reply sheet and return to Blue Bird in the enclosed **pink** postage prepaid envelope.

To receive parts required to complete this recall, confirm your proper shipping address, sign and return the enclosed **yellow** parts request sheet and return it to Blue Bird in the enclosed **pink** postage prepaid reply envelope. Additional bolts will be shipped to you "No Charge" via UPS.

A qualified technician should perform this modification or you may contact your Blue Bird distributor for assistance.

Time required to perform recall R03GZ is 1.5 hours per bus.

Reimbursement for labor may be obtained by completing the **pink** request for reimbursement sheet provided and returning it to Blue Bird in the enclosed **pink** postage prepaid envelope.

If the modifications/repair directed by this modification was performed on your bus prior to the receipt of this recall notification, complete and sign the **pink** recall reply sheet and attach a copy of the work order/invoice. Mail the documents in the self-addressed postage paid **pink** envelope included with the recall notification to Blue Bird for warranty consideration. Reimbursements will be made in accordance with the requirements of the National Highway Transportation Safety Act, title 49 Code of Federal Regulations, Parts 573 and 577.

Important: Your prompt return of the **pink** reimbursement sheet, complete with the correct Body Serial Numbers, permits Blue Bird to update the record indicating recall has been completed and prevents the mailing of a second notice. This is much appreciated. We regret any inconvenience this may have caused.

If Blue Bird Body Company should fail to or is unable to remedy this condition without charge to you, you may contact:

**ADMINISTRATOR
NATIONAL HIGHWAY TRAFFIC SAFETY ADMINISTRATION
WASHINGTON, D.C. 20590**

or you may call The National Highway Traffic Safety Administration toll free at:

1-888-327-4236

Questions regarding this recall campaign should be directed to me at (478) 822-2242.

Thank you,

Bill Coleman
Recall Administrator
BLUE BIRD BODY COMPANY



BLUE BIRD

Driver's Platform Rear Flange Bolts

MODELS AFFECTED: 1999 to 2004 All American Rear Engine (A3RE) and 1991 to 2004 TC/2000 Rear Engine (TCRE, T2RE) School Buses

RO3GZ
CAMPAIGN
RECALL

ISSUE

Bolts that attach the driver's platform rear flange to the body floor structure may not have been installed.

CORRECTIVE ACTION

Inspect rear flange of driver's platform and install bolts where needed.

PROCEDURE

1 Park bus on level surface. Turn the wheels to the left, this will allow easier access to the driver's platform area. Apply the parking brake and remove the ignition key.

The use of a 4 to 6 inch ramp will provide additional working height.

WARNING Always use jack stands under both frame rails at front of bus. If hydraulic or mechanical lift is used, place jack stands under both frame rails at the front and rear of bus.

2 Disconnect the battery cables.

3 Chock the rear wheels.

CAUTION Watch for sharp metal corners, metal edges and screws that may protrude into the work area.

CAUTION Protective eye wear should be worn at all times when working under the bus to protect the eyes from falling debris.

4 Inspect the floor joint between the Driver's Platform, the No. 2 Floor Assembly and the Front Floor Assembly for a total of fourteen (14) bolts. Twelve (12) bolts connect the Driver's Platform and the No. 2 Floor Panel Assembly. The remaining two (2) bolts connect the Front Floor Assembly and the No. 2 Floor Panel Assembly and can be accessed from between the frame rails. See "Bolt Locations" illustration on page 2.

If all bolts are installed, **STOP**. No further action is required.

5 If any bolts are missing, install bolts, lock washers, and nuts. Torque all bolts to 10 to 15 ft-lbs.

6 If the holes in the flanges on the floor panels do not line up, backdrill 11/32 (.344) diameter holes using existing holes as guides. Using a 90 degree angle drill is recommended.

CAUTION Use a backing plate between the heater hoses and the body flange to prevent damage to heater pipes and hoses.

7 After completing inspection and/or installation of the bolts, follow the repair facilities recommended guidelines for removal of lifts, jack stands and wheel chocks.

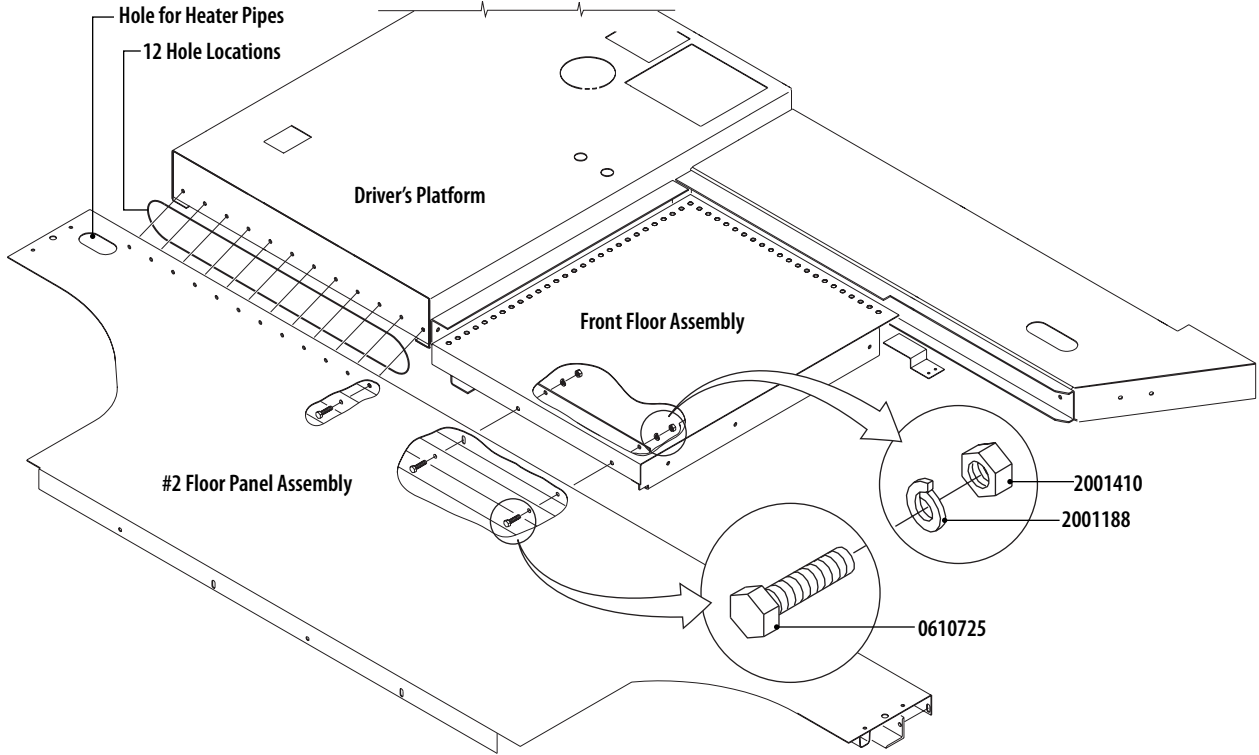
8 Reconnect battery cables.

PARTS LIST

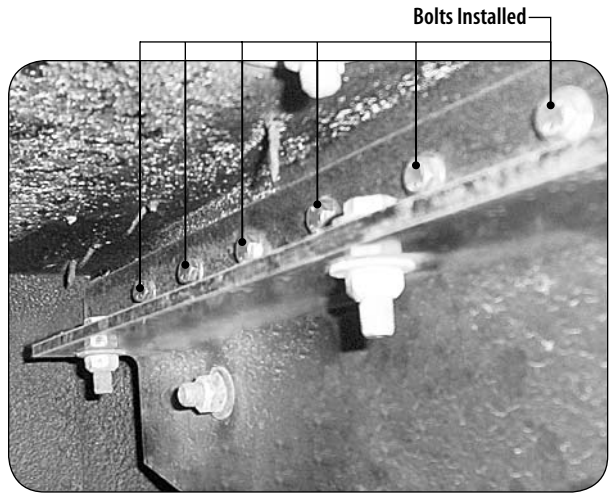
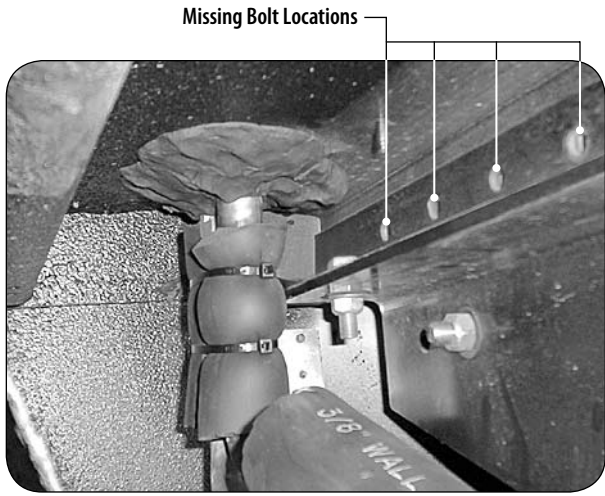
Part Number	Quantity	Description
0610725	14	Bolt, Hex Head, 5/16 -18 x 1 1/4, Grade 8
2001188	14	Lock Washer, Split Ring, 5/16
2001410	14	Nut, Hex Head, 5/16 -18



RECALL CAMPAIGN RO3GZ



Bolt Locations



Heater Pipe Passage Through No. 2 Floor Panel Assembly (Left Side of Bus)