



R10SF

August 16, 2010

Dear Blue Bird Owner:

This notice is sent to you in accordance with the requirements of The National Traffic and Motor Vehicle Safety Act.

Blue Bird has decided that a noncompliance which relates to motor vehicle safety exists in certain 2010 and 2011 model year All American and Vision model school and non-school buses manufactured from March 25, 2009 through January 12, 2010.

On the subject buses, the driver's seat shock damper may break at the attaching tab allowing the driver's seat to unexpectedly drop to the floor without warning. In the event this should occur while the bus is operation, the driver may lose control momentarily which could result in a crash potentially causing injury or death to occupants of the bus or pedestrians. Buses with this defect must be corrected according to the enclosed instructions for Recall R10SF.

You may contact your Blue Bird dealer to arrange to have this recall performed. Or, if you prefer, you may perform this recall yourself or have a qualified repair facility convenient to you perform this recall. A qualified technician should perform this recall.

The date code on your driver's seat shock damper must be inspected according to the enclosed instructions. Enter the date code on the enclosed "Recall R10SF Inspection Reply Sheet" and return to Blue Bird in the enclosed pink reply envelope.

If the date code is within the range specified in the instructions a replacement driver's seat shock will be shipped to you. If the date code is within the defective date code range, be sure to include your street address for UPS delivery. UPS does not deliver to Post Office boxes.

Labor time to **inspect** for shock manufacturing date code is 0.2 hours (12 minutes) per bus.

Labor time to **inspect and replace** a defective driver's seat shock is 1 hour per bus.

If you no longer own the subject coach(es) please complete the appropriate section of the attached cover sheet and return to Blue Bird in the enclosed pink postage paid reply envelope.

If the modifications/repairs directed by this notification were performed on your bus prior to the receipt of this recall notification, complete and sign the recall reply sheet and attach a copy of the work order/invoice. Mail the documents in the **pink** self-addressed postage paid envelope included with the recall notification to Blue Bird for warranty consideration. Reimbursements will be made in accordance with the requirements of the National Highway Transportation Safety Act, title 49 Code of Federal Regulations, Parts 573 and 577.

Federal law requires that any vehicle lessor receiving this recall notice must forward a copy of this notice to the lessee within ten days.

If Blue Bird Body Company should fail to or is unable to remedy this condition without charge to you, you may contact:

**ADMINISTRATOR
NATIONAL HIGHWAY TRAFFIC SAFETY ADMINISTRATION
1200 NEW JERSEY AVENUE, SE
WASHINGTON, D.C. 20590**

or you may call The National Highway Traffic Safety Administration toll free at:

1-888-327-4236
TTY: 1-800-424-9153
or got to: <http://www.safercar.gov>

Sincerely,



Bill Coleman
Corporate Recall Administrator
BLUE BIRD BODY COMPANY



Blue Bird Body Company
Recall R10SF National Driver's seat Inspection Reply Sheet

Please complete the form below and return to Blue Bird in the pink reply envelope provided. If parts are required, be sure to include a street address, contact person and telephone number.

Blue Bird Body Number	Seat Production Date Code	Shock Production Date code	Date Inspected

Form Completed by: _____
(Print Name)

Signature: _____ Date: _____

Ship replacement driver's seat shocks to:

School/Company: _____

Address: _____

City: _____

State: _____ Zip: _____

Contact Person: _____ Telephone: _____



NATIONAL DRIVER'S SEAT SHOCK INSPECTION/REPLACEMENT

RECALL

Models Affected: 2010 and 2011 Model Year All American and Vision

ISSUE

The driver's seat shock damper may break at the mounting tab allowing the driver's seat to unexpectedly drop to the floor without warning.

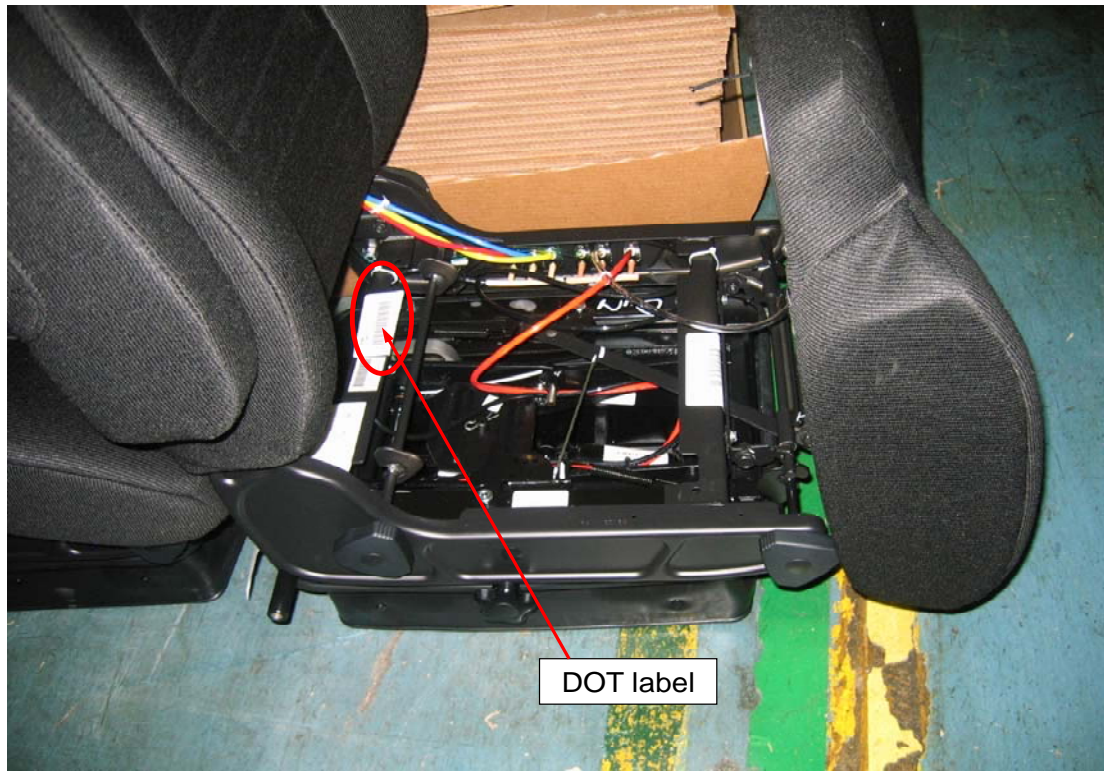
CORRECTIVE ACTION

Inspect driver's seat shock damper production date code. Replace shocks that fall within the specified production date codes identified in the following instructions.

PROCEDURE

WARNING: Always follow all Federal, State, Local and Shop safety standards and use proper safety equipment when performing these procedures.

1. Park the bus on a level surface, apply parking brakes, turn off engine and remove keys. Chock wheels.
2. Slide driver's seat cushion forward and raise rear end of cushion up and locate the DOT label with the seat production date.

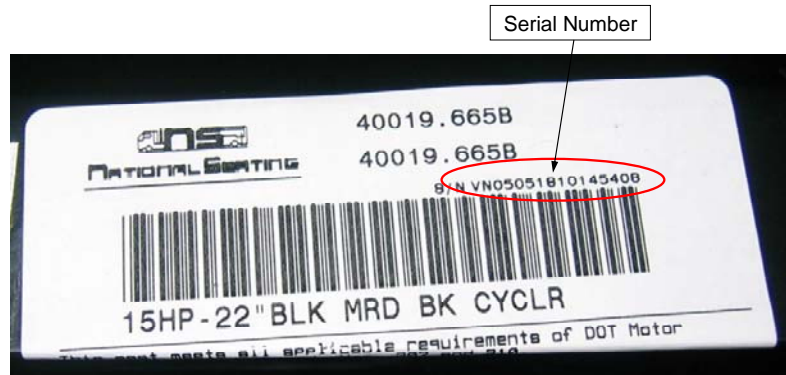




NATIONAL DRIVER'S SEAT SHOCK
INSPECTION/REPLACEMENT

RECALL

- Determine the seat production date on the DOT Label as follows;



DOT Label

How to read date code from serial number using same serial number shown in previous slide as an example

VN05051810145408
Month

VN05051810145408
Day

VN05051810145408
Year

In this example the manufacturing date is May-18-2010

- If the seat production date on the DOT label is prior to 03/10/2009 or later than 12/04/2009, then the unit can be returned to service without any further work.
- If the seat production date on the DOT label is anytime from 03/10/2009 thru 12/04/2009, then the seat shock production date must be checked.

R I O S F

R E C A L L C A M P A I G N

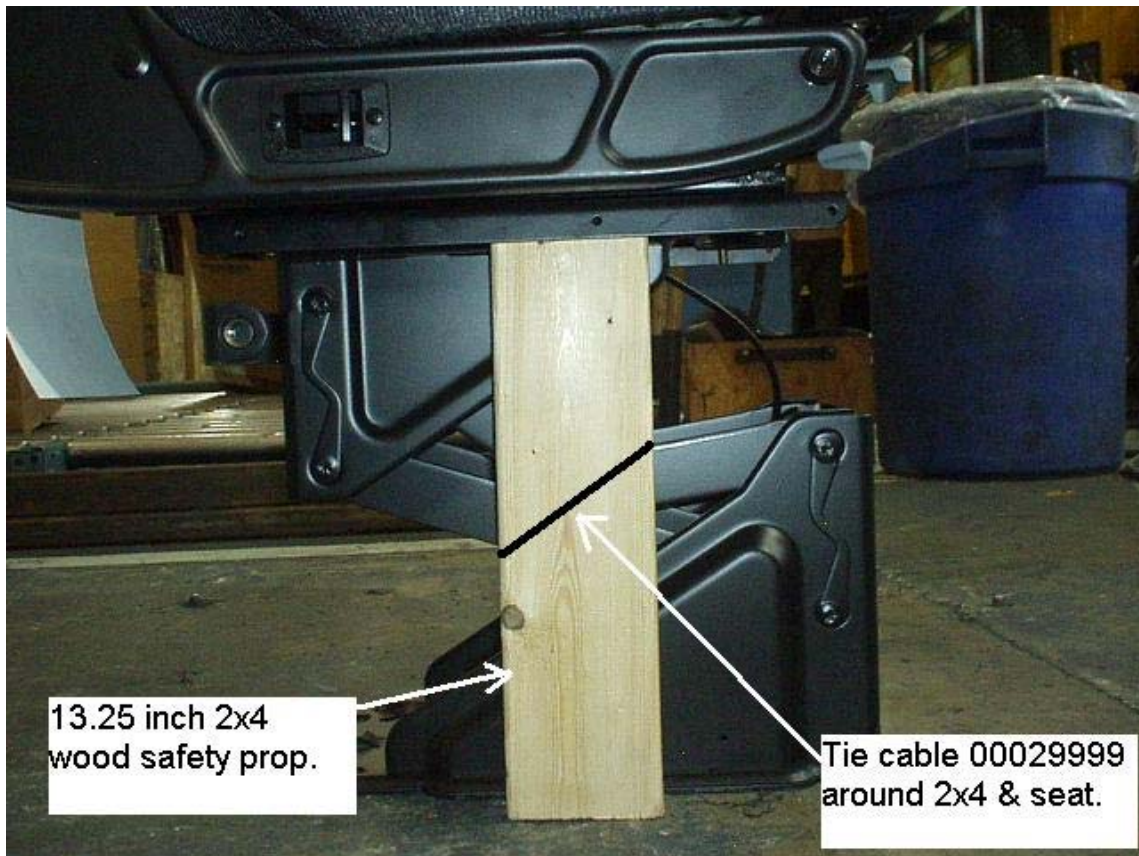


NATIONAL DRIVER'S SEAT SHOCK INSPECTION/REPLACEMENT

RECALL

6. Press valve on RH side of seat to raise driver's seat to the highest position.
7. Place a 13.25" long 2" x 4" wood safety prop under side of seat as shown to support seat safely while checking the seat shock production date and also to support driver's seat while changing out seat shock. Position top of 2" x 4" wood safety prop in place under driver's seat and push or tap bottom end over toward seat base to support seat.

Warning: The 2" x 4" wood safety prop should be held tightly in place to ensure personal safety while seat shock is unbolted using a 00029999 cable tie.



R I O S F

R E C A L L C A M P A I G N



NATIONAL DRIVER'S SEAT SHOCK INSPECTION/REPLACEMENT

RECALL

8. Locate the shock production date on the lower end of the shock.

If the shock is installed with the production date on the bottom side of the shock, disconnect lower end of shock and rotate so that shock production date can be inspected.

Note: It may be possible to look at the shock production date on lower side of shock by looking from the rear of the seat base with a flash light.

If the shock production date is before 060/09 or after 337/09, (see shock production date example below), then the shock can be reattached, if it was disconnected, 2x4 wood safety prop can be removed, and the unit can be returned to service.



9. If the shock production date is **from 060/09 thru 337/09**, then the seat shock must be removed and a new seat shock installed as follows;

Warning: Be sure 2" x 4" wood safety prop is installed correctly with cable tie in place to support driver's seat while shock is being replaced!

R I O S F

R E C A L L C A M P A I G N



NATIONAL DRIVER'S SEAT SHOCK INSPECTION/REPLACEMENT

RECALL

10. Use the following procedure to replace a defective shock. Begin with driver's seat base fully extended.

Warning: Be sure a 2" x 4" wood safety prop is installed correctly with cable tie in place to support driver's seat while shock is being replaced!

11. Loosen nut on threaded shaft with 11/16" wrench



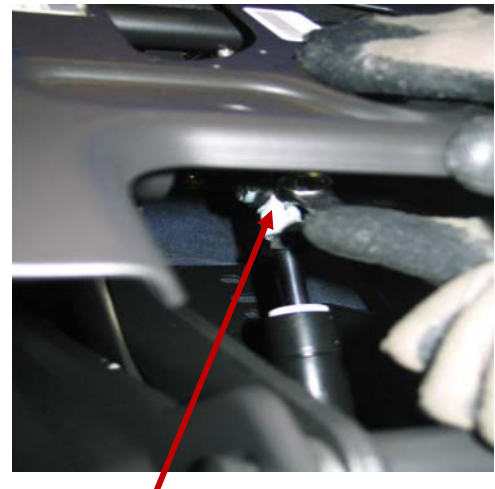
12. Use a 1/2" wrench and socket to loosen nuts on upper and lower shock



13. Loosen top nut on upper shock mount



14. Pull down on release lever of shock and remove cable from lever. To remove shock push down on shock base to collapse shock.



Release Lever

R I O S F

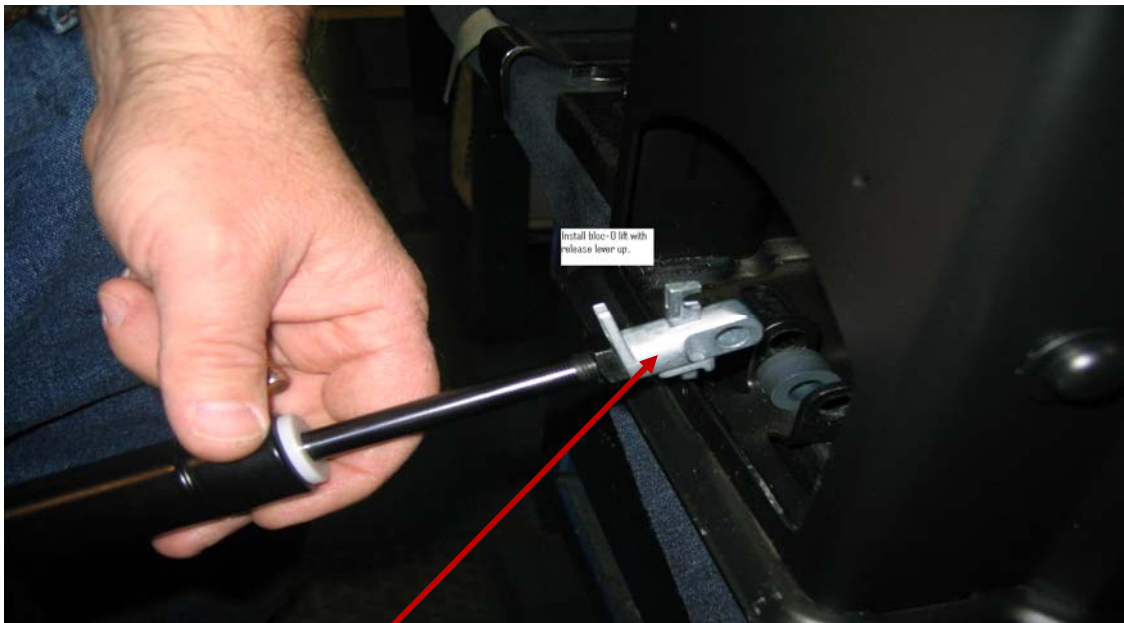
R E C A L L C A M P A I G N



NATIONAL DRIVER'S SEAT SHOCK INSPECTION/REPLACEMENT

RECALL

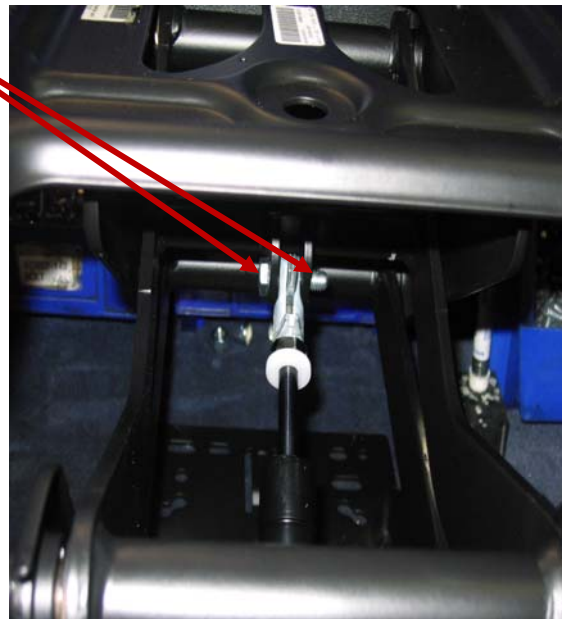
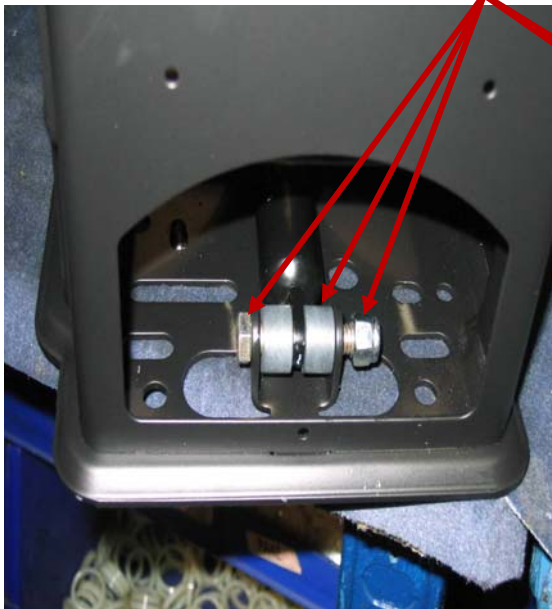
15. Place the new shock in the driver's seat base. The release lever must point up and toward the front of the base when shock is installed.



Release Lever

16. Install shock to upper shock mount in base. Use the same bolts, spacers and nuts that were removed when the defective shock was removed. Fasteners must be torqued a minimum 10 FT-LB and a maximum of 14 FT-LB. **DO NOT OVERTIGHTEN!**

Install bolts, spacers and nuts



R I O S F

R E C A L L C A M P A I G N



NATIONAL DRIVER'S SEAT SHOCK
INSPECTION/REPLACEMENT

RECALL

17. Install control cable into the lever at the top of the shock.



Control Cable

18. Place control cable in the release lever. Release lever fits into the upper shock mount. Place cable into position in lever as shown. Tighten nut on bottom of release lever with 11/16" wrench.

Tighten
Nut



19. Remove 2" x 4" wood safety prop from underneath the driver's seat base.

20. Remove wheel chocks and return bus to service.

<u>Part Number</u>	<u>Description</u>	<u>Qty</u>
00117401	DAMPER, SHOCK, SEAT, NATIONAL SEAT	1 (as required)
N/A	2" x 4" x 13.25" long wood safety prop	1 (as required)
00029999	Tie, Cable, 120lb 15.25L	1 (as required)

R I O S F

R E C A L L C A M P A I G N